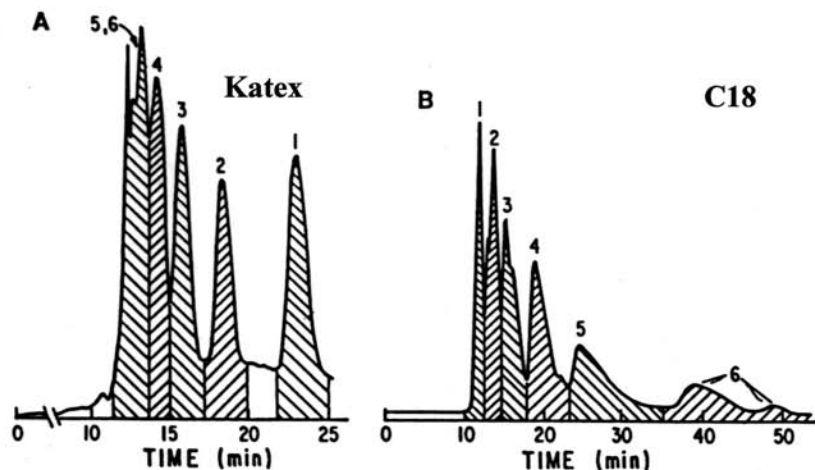


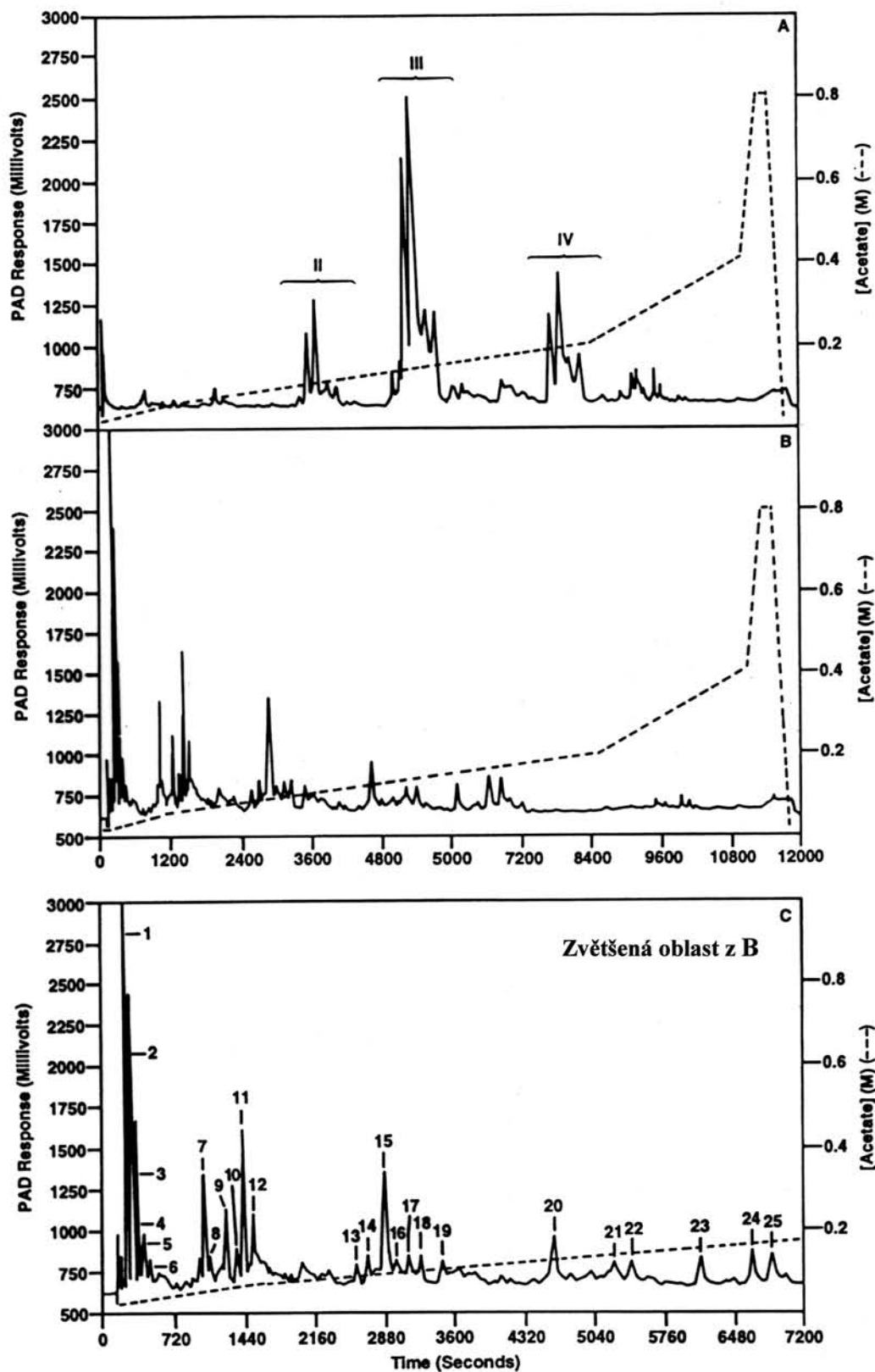
Preparativní HPLC malto-oligosaccharidů.

(A) 12 mg injection on a 20 × 250 mm column packed with Dynamax C₁₈ stationary phase eluted with water at 3 ml/min and 100 psi at room temperature. (B) 500 mg injection on a 20 × 250 mm column packed with aminopropyl silica gel eluted with acetonitrile–water (55:45) at 12 ml/min and 1000 psi at room temperature. (C) 125 mg injection on a 20 × 300 mm column packed with AG 50W-X4 (Ag⁺ form) eluted at 1.1 ml/min with water at 85°C and at 150 psi. RI detection on all chromatograms. Numerals above peaks in (A) and (B) refer to oligosaccharide dp value. In (C), dp value is at base of peak and numeral at top refers to calculated resolution values

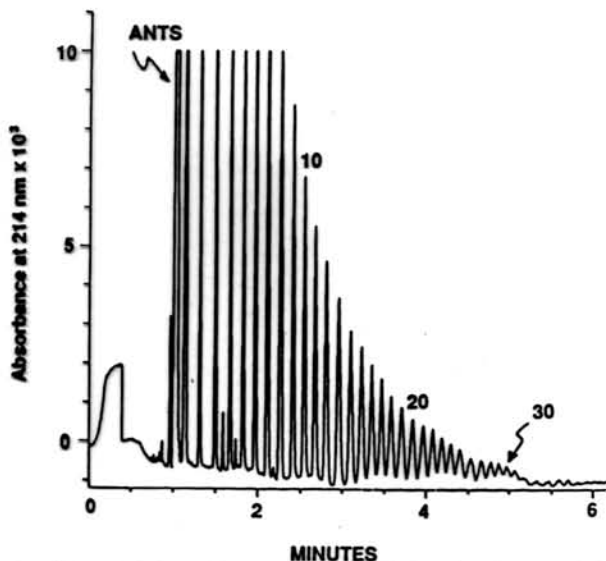


Preparativní HPLC oligosaccharidů odvozených od chitinu.

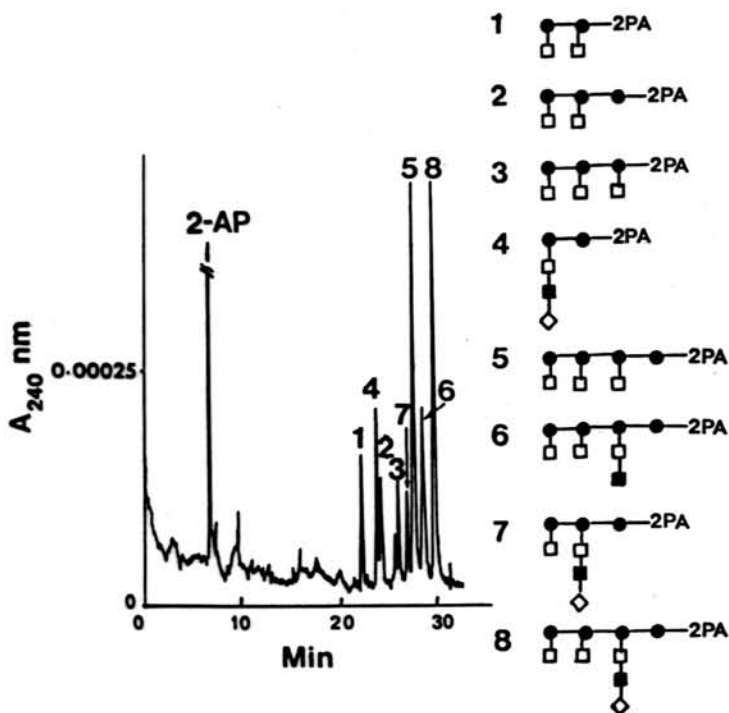
(A) 15 mg injection on a 7.8 × 30 mm column packed with HPX-87H cation exchange resin, eluted with 0.1 N H₂SO₄ at 0.3 ml/min and 75°C. (B) 140 mg injection on a 20 × 300 mm column packed with Dynamax C₁₈, eluted with water at 4 ml/min at room temperature. RI detection. Numerals above peaks refer to oligosaccharide dp value.



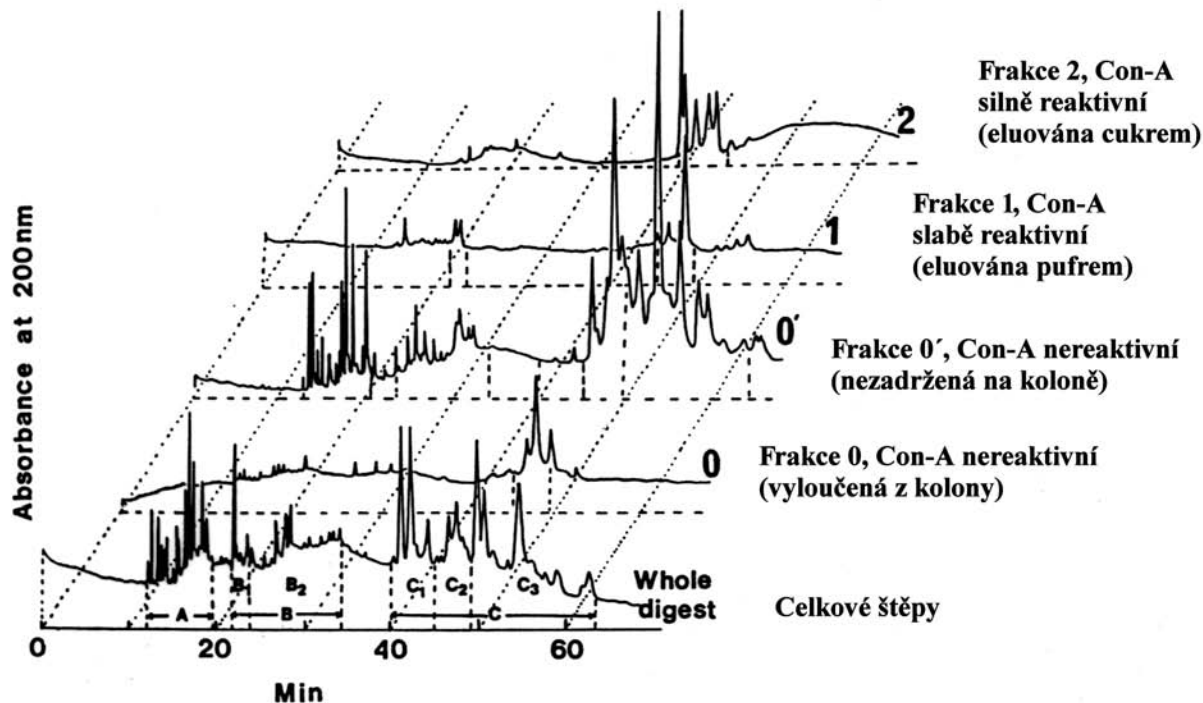
Otisk prstu (fingerprinting) na Dionex anexovém systému (HPAE-PAD II) při vysokém pH. (A) Asn-linked oligosaccharides released from bovine fetuin. The clusters of peaks denoted by *n*, II, III and IV represent neutral, di-sialylated, tri-sialylated and tetra-sialylated oligosaccharides, respectively. (B) Asn-linked oligosaccharides released from HK-293 cell derived rHPC. (C) Expansion of the region of chromatogram (B) between 0 and 120 min.



Kapilární elektroferogram ANTS-derivatizovaných monosacharidů v 50 mM sodno/triethylammoniovém fosfátovém pufru, pH 2,5, obsahující 10,8 mM TEA. Capillary, 270 mm \times 50 μ m; temperature, 25°C; voltage, 22 kV; 80 ng of sample.



Kapilární zónová elektroforéza - mapování pyridylamino-derivátů xyloglukamových oligosacharidů ze stěn buněk bavlny. Capillary, fused-silica tube with polyether interlocked coating on the inner walls, 50 cm (to the detection point), 80 cm total length \times 50 μ m i.d.; electrolyte, 0.1 M sodium phosphate solution containing 50 mM tetrabutylammonium bromide, pH 4.75; running voltage, 20 kV. Symbols: 2-AP = 2-aminopyridine; ● = glucose, □ = xylose, ■ = galactose; ◇ = fucose.



Kapilární zónová elektroforéza - tryptické mapování lidského AGP (glykoprotein). Capillary, fused-silica tube with hydrophilic coating on the inner walls, 45 cm (to the detection point), 80 cm total length \times 50 μm i.d.; electrolyte, 0.1 M phosphate solution, pH 5.0; running voltage; 22.5 kV; injection by electromigration for 4 s at 22.5 kV. Symbols: fraction 0, con A non-reactive (excluded from the column); fraction 0', Con A non-reactive (unretained by the column); fraction 1, Con A slightly reactive (eluted with buffer); fraction 2, Con A strongly reactive (eluted with the haptenic sugar).